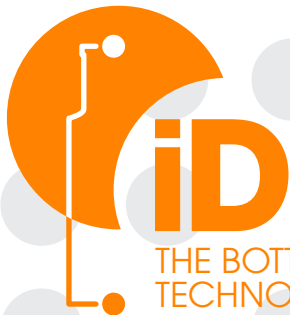


SAVER GLASS

# THE TRACEABILITY SOLUTION



THE BOTTLE LIFE TRACER  
TECHNOLOGY

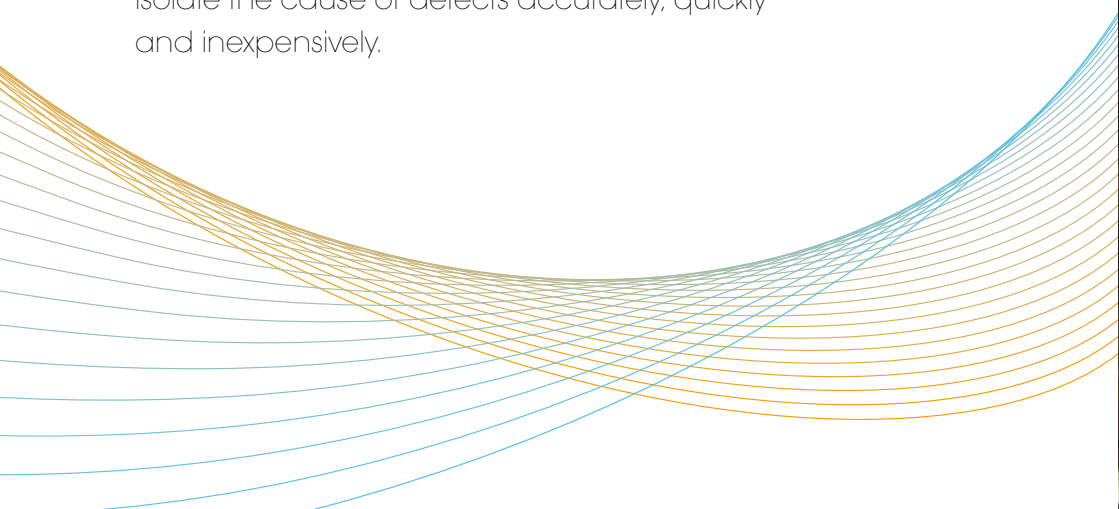
# TRACEABILITY

## ADDRESSING MULTIPLE CHALLENGES

02

In a global wines and spirits market where issues of quality, traceability and authentication are increasingly important, Saverglass **offers a solution for identifying each bottle and tracing every component and operation that has gone into its production.**

**Traceability** means, in particular, being able to isolate the cause of defects accurately, quickly and inexpensively.





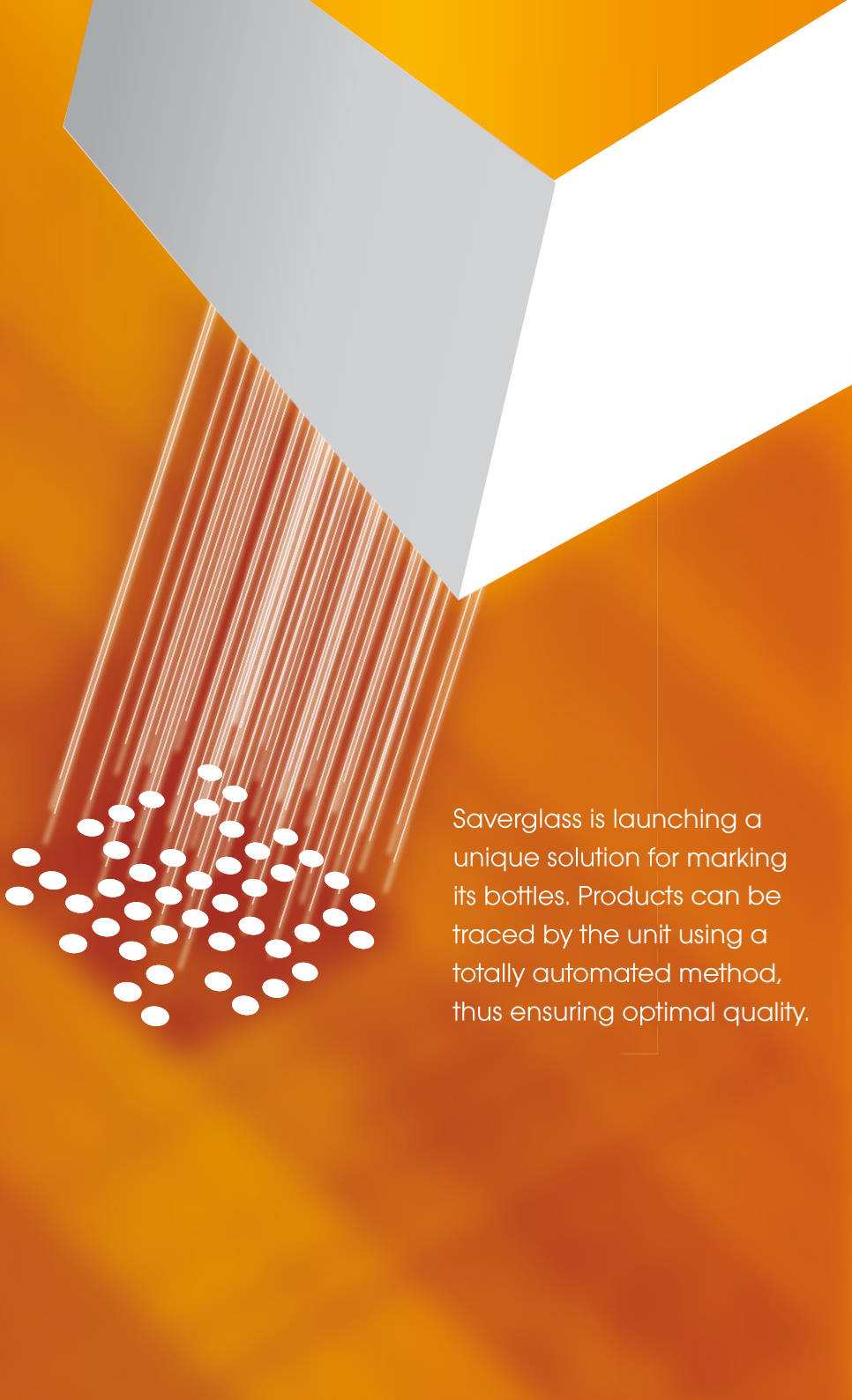


# KEY ADVANTAGES OF TRACEABILITY



## TRACEABILITY

- Identifies each bottle and traces all operations that led to its production
- Reduces defects and non-standard products
- Protects against counterfeiting/ensures authentication
  - Protects the brand image
  - Showcases the bottle and its uniqueness
- Complies with food safety regulations (European directives, etc.)



Saverglass is launching a unique solution for marking its bottles. Products can be traced by the unit using a totally automated method, thus ensuring optimal quality.

# AN INNOVATIVE IDENTIFICATION SOLUTION THAT MEETS MARKET STANDARDS

**THE SOLUTION INVOLVES A DATA MATRIX CODE  
WHICH CANNOT BE ALTERED.**

07

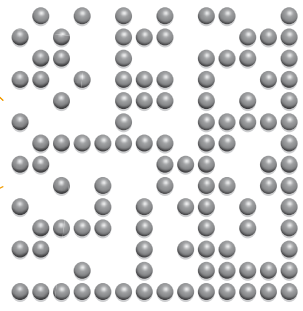
## **THIS SOLUTION ENSURES**

- **Product quality control, by providing**
  - Stricter quality control during production
  - Swifter, more reliable responses to quality issues reported by customers
  - Brand protection by reducing product recalls
- **Bottle authenticity, by**
  - Recognizing the bottle's identity
  - Or recognizing a copy

**BOTTLES INDIVIDUALLY IDENTIFIED  
WITH COMPLETE ACCURACY**



DATAMATRIX CODE  
**AT THE BASE**



08

# A UNIQUE... DATAMATRIX CODE

DATAMATRIX CODE  
**ON THE NECK**



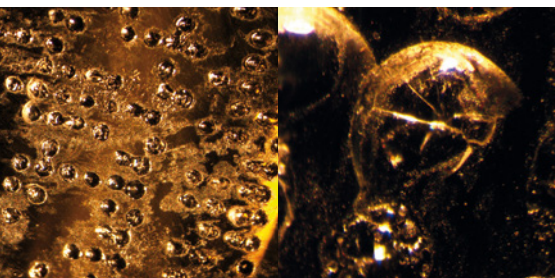
# ... FOR A **UNIQUE BOTTLE**



## **BOTTLE INDIVIDUALLY MARKED**

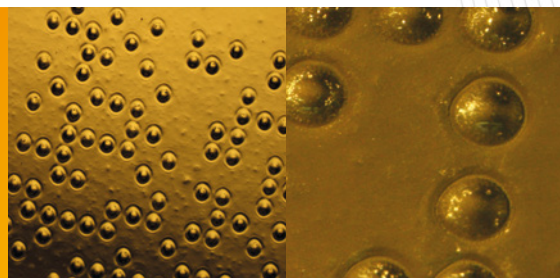
(HEAT ENGRAVING)

- A **Datamatrix** code is a unique code engraved in production (24 figures in a 8mm x 8mm square of dots, which cannot be forged or altered)
- The clarity of the mark means that it can be scanned reliably and recognized immediately (absolute certainty as to the date and time of manufacture).  
It is applied using heat engraving which, unlike cold marking, does not cause micro-cracks
- Very discreet on the glass
- Highly aesthetic.
- Complies with recommended standards:  
DATAMATRIX ECC200 and ISO/IEC 16022:2006



### **COLD ENGRAVING**

Offered by the market



### **HEAT ENGRAVING**

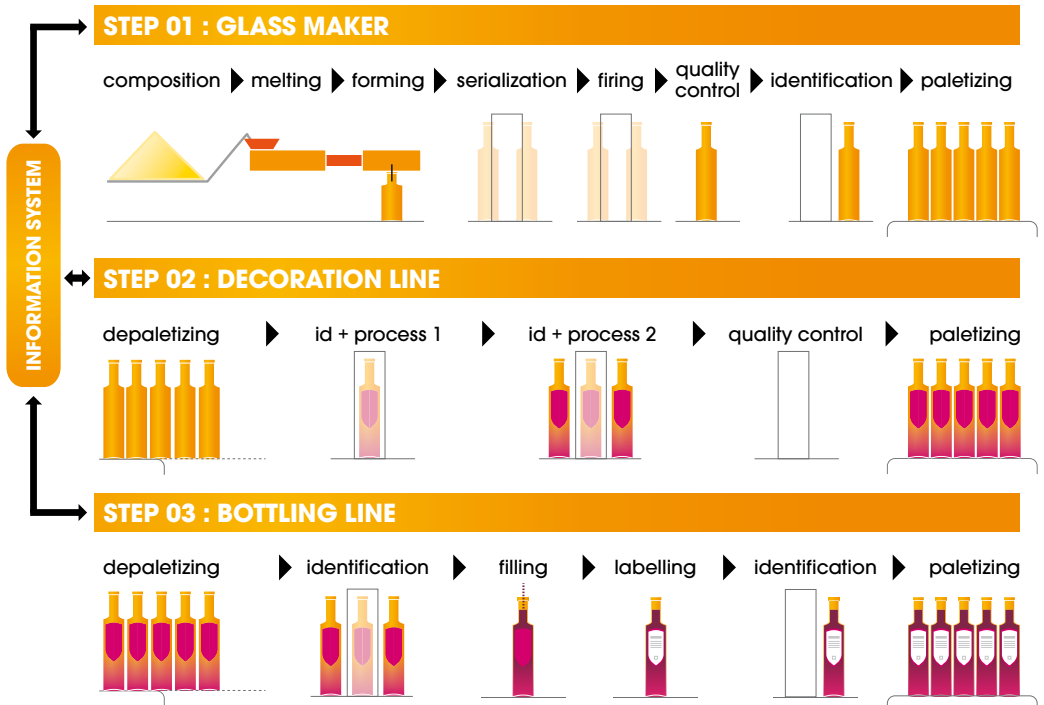
by SAVERGLASS

# CONTROLLING AUTHENTICITY



## FOR OPTIMIZED QUALITY CONTROL

10



# THE SAVERGLASS DATA MATRIX MARKING SOLUTION **MEANS**

- **BOTTLES AND OPERATIONS ARE REGISTERED IN A DATABASE (FROM COLD END TO DECORATION...)**
- **EVERY BOTTLE IS KNOWN AND TRACKED FROM THE OUTSET**

## **HOW TO USE IT**

- Code scanning
- Saverglass exchange portal

## **ADVANTAGES**

- Certainty of the bottle's source, identity and authenticity (copy detection)
- Ability to analyze causes of possible defects
- Better responsiveness in managing quality issues

## **OUTLOOK**

- Each bottle identified using this method increases your traceability, improving authentication and flow control.



**SAVERGLASS**

3, PLACE DE LA GARE  
60960 FEUQUIERES FRANCE  
Tél. : +33 (0)3 44 46 45 45  
info@saverglass.com

[www.saverglass.com](http://www.saverglass.com)